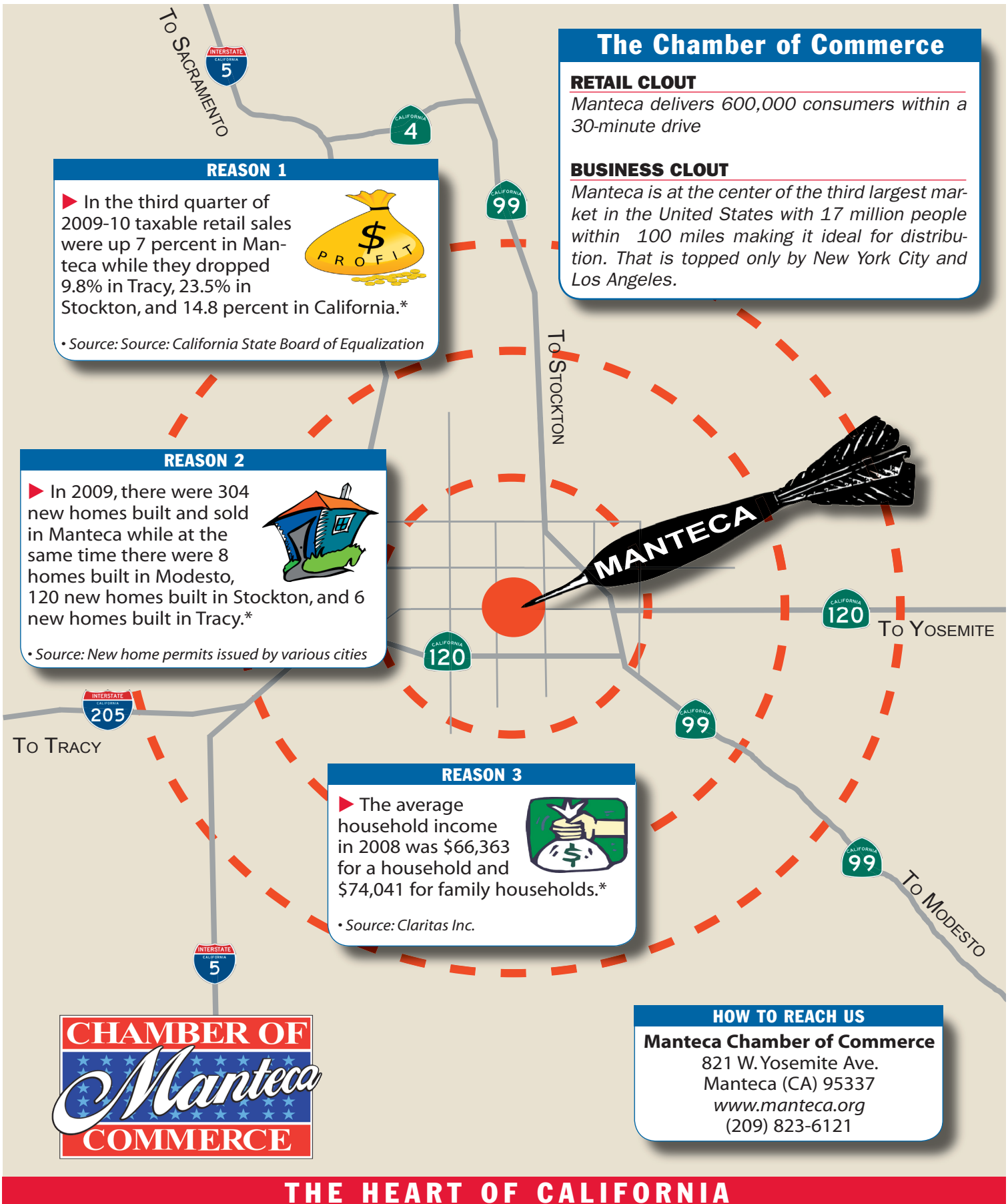


ON TARGET FOR BUSINESS



The Chamber of Commerce

RETAIL CLOUT

Manteca delivers 600,000 consumers within a 30-minute drive

BUSINESS CLOUT

Manteca is at the center of the third largest market in the United States with 17 million people within 100 miles making it ideal for distribution. That is topped only by New York City and Los Angeles.

REASON 1

► In the third quarter of 2009-10 taxable retail sales were up 7 percent in Manteca while they dropped 9.8% in Tracy, 23.5% in Stockton, and 14.8 percent in California.*



* Source: Source: California State Board of Equalization

REASON 2

► In 2009, there were 304 new homes built and sold in Manteca while at the same time there were 8 homes built in Modesto, 120 new homes built in Stockton, and 6 new homes built in Tracy.*



* Source: New home permits issued by various cities

REASON 3

► The average household income in 2008 was \$66,363 for a household and \$74,041 for family households.*



* Source: Claritas Inc.

HOW TO REACH US

Manteca Chamber of Commerce
 821 W. Yosemite Ave.
 Manteca (CA) 95337
www.manteca.org
 (209) 823-6121



THE HEART OF CALIFORNIA